

April 24, 2015

For Immediate Release

Tokyo Tatemono Co., Ltd.

Tokyo Tatemono Real Estate Sales Co., Ltd.

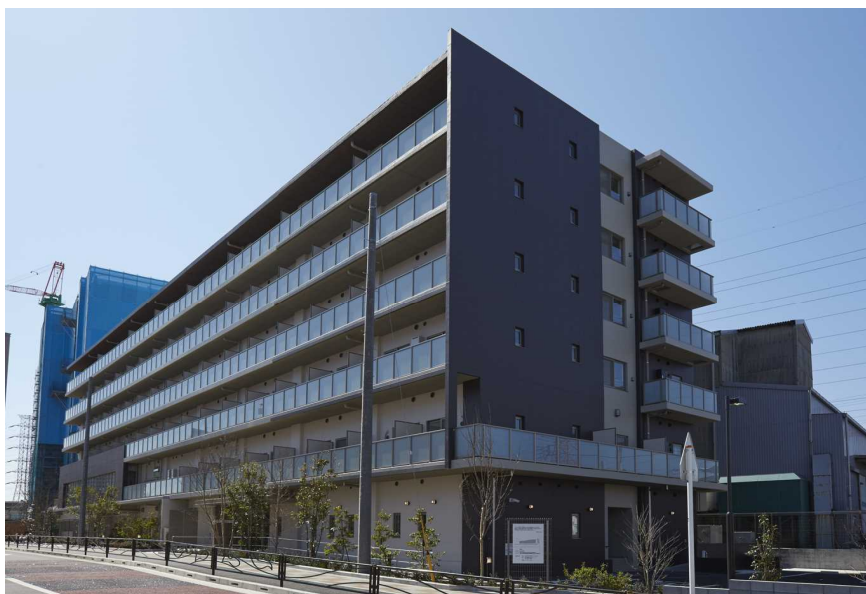
## **Elderly and preschoolers interact through gardening Residences for elderly people with service Grapes Kawasaki Shinmachi Opens April 25**

Tokyo Tatemono Co., Ltd. here announces the opening of Grapes Kawasaki Shinmachi in April 25, 2015. Grapes Kawasaki Shinmachi is a residence for the elderly that provides some nursing care services. The living facilities are adjacent to a licensed preschool that is managed by Benesse Style Care Co., Ltd., a major preschool operator.

The preschool is located adjacent to Grapes Kawasaki Shinmachi. The preschool is on the first floor and there is a garden on the second floor. The garden will be a place for the elderly residents and preschoolers to interact by raising flowers, rice, and vegetables together. As there are more and more nuclear families, senior citizens and preschoolers do not get to interact on a daily basis but we aim to increase interaction through gardening. The aim is to motivate senior citizens and help them maintain their health. Grapes Kawasaki Shinmachi aims to support individualized lifestyles, which is the concept of the Grapes series.

### **Features of Grapes Kawasaki Shinmachi**

1. Adjacent to a licensed preschool. Interaction with preschoolers through gardening.
2. A concierge, working with the nursing care and medical facilities, is on hand to offer support to residents
3. Introduce package plans that allow residents to combine services that fit their needs
4. 11 different room types with facilities and specifications that are equivalent to those of a regular condominium
5. Lifetime leases and leases that do not require a deposit when moving in



Picture of exterior

## 【Property overview】

Location	2-3-2 Oda-sakae, Kawasaki-ku, Kawasaki, Kanagawa (displayed address)
Access	7-minutes by bus from Kawasaki station on the JR Tokaido line, Keihin Tohoku line, and Nambu line to the Oda-sakae bus stop and 3-minutes walk from the Oda-sakae bus stop 7-minutes by bus from the Keikyū Kawasaki station on the Keihin Kyūko line and Daishi line to the Oda-sakae bus stop, and 3-minutes walk from the Oda-sakae bus stop 11-minutes walking distance from the Kawasaki Shinmachi station on the JR Nambu line
Size	6 floor building
Total floor space	3,455.79 m <sup>2</sup>
No. of residences	69 residences plus stores (licensed preschool, visiting nursing care office, and in-home care support office)
Floor plans	Studio - 2 LDK (two-bedroom, living, dining, kitchen)
Dedicated area	18.27 m <sup>2</sup> - 59.51 m <sup>2</sup>
Monthly rent	¥81,000 - ¥287,000
Monthly management fee	¥15,000 (bathing facilities), ¥20,000 (no bathing facilities)
Basic services (tax included)	¥37,800 (one person), ¥64,800 (two people)
Common areas	Front, cafeteria, kitchen, resident relations office, communal bathing facilities, bathing facilities with equipment to assist in bathing, storage room

## Map of location

