

April 20, 2018

For Immediate Release

Tokyo Tatemono Co., Ltd.

**First Project in Bangkok, Thailand**  
**Participating in Development Projects of For-sale Condominiums**  
**Joint Project with Local Real Estate Developer Raimon Land**

Tokyo Tatemono Co., Ltd. (headquarters: Chuo-ku, Tokyo; President and Chief Executive Officer: Hitoshi Nomura; hereafter, “Tokyo Tatemono”) announces it has decided to participate in two development projects of for-sale condominiums in the central district of Bangkok Thailand jointly with Raimon Land Public Company Limited (headquarters: Bangkok; CEO: Adrian Lee; hereafter, “Raimon Land”), a local developer, and concluded a joint venture agreement with Raimon Land through Tokyo Tatemono Asia Pte. Ltd., a group company in Asia on April 19, 2018. This will be Tokyo Tatemono’s first project in Thailand.

The project is the new development of high-grade for-sale condominiums in the Sukhumvit and Sathorn areas located in the central district of Bangkok, Thailand. A total of approximately 400 units will be constructed and the total project cost is scheduled to be approximately 28 billion yen for the two projects.

Raimon Land, which will be the business partner, is a local developer established in 1987. The company develops high-quality products with refined design targeting the upper middle class mainly in the metropolitan area and is well-received in Thailand.



CG Rendering of Sathorn Project

The “embodiment of businesses in emerging Asian countries, etc.” is one of our efforts in the overseas business field in the current mid-term business plan of the group and this project will be our third project conducted in an ASEAN country following Singapore and Myanmar. Thailand has the second largest GDP scale after Indonesia among ASEAN countries and is a market where strong residential demand is expected over the medium to long term while further increase in middle- and high-income classes is forecasted as a result of stable economic growth. We will continue to strive to further obtain business opportunities in emerging Asian countries, etc. by utilizing the experience and know-how which we have accumulated in Japan.

■ **Project Overview** \*The details of the project are as of the current date and may change in the future.

**(1) Sukhumvit Project**

Address	Sukhumvit Area (near BTS Phrom Phong)
Site area	Approximately 3,200 m <sup>2</sup>
Total floor space	Approximately 29,000 m <sup>2</sup>
Total exclusive area	Approximately 16,000 m <sup>2</sup>
Structure/Scale	Reinforced concrete, B3F/31F (planned)
Total no. of units	Approximately 150
Product composition	Mainly 2 Bedroom & 3 Bedroom Units
Construction period	Start: 2019 Completion: 2021 (planned)

**(2) Sathorn Project**

Address	Sathorn Area (near BTS Chong Nonsi)
Site area	Approximately 2,900 m <sup>2</sup>
Total floor space	Approximately 34,500 m <sup>2</sup>
Total exclusive area	Approximately 17,500 m <sup>2</sup>
Structure/Scale	Reinforced concrete, B2F/36F (planned)
Total no. of units	Approximately 250
Product composition	Mainly 1 Bedroom Units
Construction period	Start: 2019 Completion: 2021 (planned)

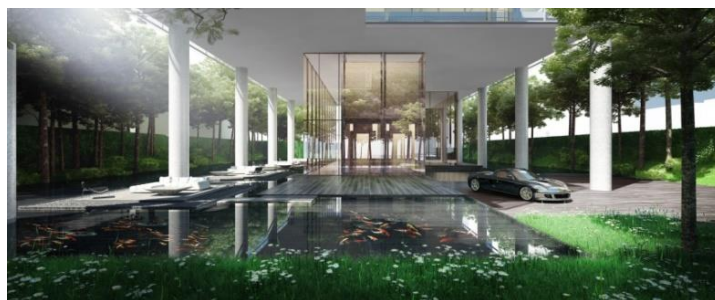
**CG Rendering of Sathorn Project** \*The details of the project are as of the current date and may change in the future.



CG Rendering (exterior)

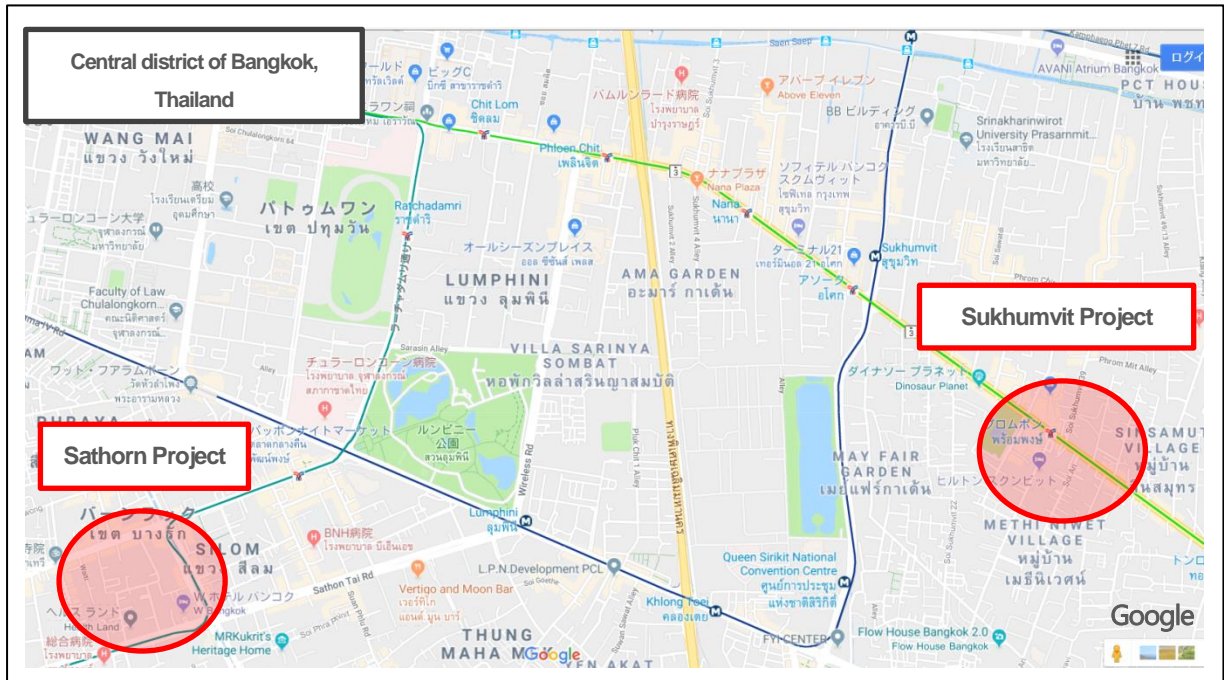


CG Rendering (common area)



CG Rendering (entrance)

■ Map of Location



■ Signing Ceremony held on April 19, 2018



Tokyo Tatemono Asia Managing Director Betsuno Kazuhiro, Tokyo Tatemono Director & Executive Managing Officer Katsuhito Ozawa and Raimon Land CEO Adrian Lee, Chairman of Executive Committee Lionel Lee and CFO Sataporn Amornvorapak from the left

## ■Overview of Companies

- Tokyo Tatemono Co., Ltd.

Headquarters Address	1-9-9 Yaesu, Chuo-ku, Tokyo
Established	October 1896
Capital	JPY 92.4 billion
Business activities	Development, leasing and management of office buildings, commercial facilities, etc., development and sales of condominiums, etc. and others
No. of employees	587 (as of December 31, 2017)
Representative	Hitoshi Nomura, President and Chief Executive Officer

- Raimon Land Public Company Limited

Headquarters Address	19th Floor, Rajanakarn Building, No. 3 South Sathorn Road, Kwaeng Yannawa, Khet Sathorn, Bangkok, Thailand
Established	1987
Registered capital	THB 4.7 billion (JPY 16.5 billion) (Exchange rate: 1 baht = 3.5 yen)
Business activities	Development and sales of condominiums, etc. and others
No. of employees	165 (as of December 31, 2017)
Representative	CEO Adrian Lee



## ■Tokyo Tatemono's Overseas Business

Tokyo Tatemono has established local entities in Shanghai and Singapore and is now progressing its development business primarily in China and ASEAN countries

### Track record in ASEAN

Project name	CPF Building Redevelopment Project
Address	Robinson Road, Singapore
Use	Offices, commercial facilities
Land area	4,371 m <sup>2</sup>
Total floor space	Approximately 57,400 m <sup>2</sup>
Completion	2020 (planned)



CG Rendering

Project name	Former Site of Yangon Military Museum Redevelopment Project
Address	Center of Yangon, Myanmar
Use	Offices, commercial facilities, hotel
Land area	Approximately 16,000 m <sup>2</sup>
Total floor space	Approximately 92,000 m <sup>2</sup>
Completion	2020 (planned)



CG Rendering