



## Supplementary Data of Consolidated Financial Statements

for the Year Ended March 31, 2021 (IFRS Basis)

April 26, 2021

NITTO DENKO CORPORATION

### CONTENTS

	Page
◆ Summary of Results and Forecasts	1
◆ Management Indices	1
◆ Business Results and Forecasts	2
◆ Revenue and Operating Income by Segment	3
◆ Revenue and Operating Income Forecasts by Segment	4
◆ Segment Revenue by Location	5
◆ Revenue to Customers outside Japan	6

(Note) In the amounts of money in this document, fractions below the shown figures are omitted. Percentages(%) are rounded to the nearest decimal point.

In this document, year-on-year changes from same period in the previous year are shown as YoY, quarter-on-quarter changes from the previous quarter are shown as QoQ.

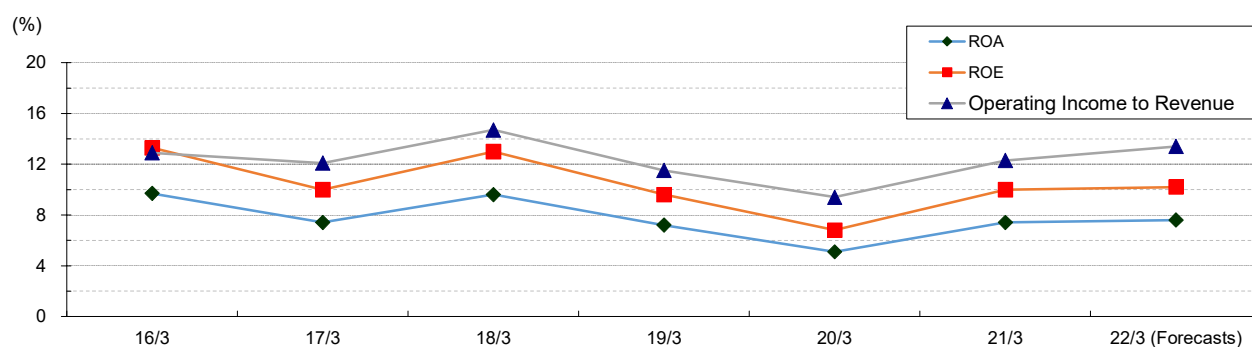
Forward-looking statements such as those relating to earnings forecasts and other projections contained in this material are management's current assumptions and beliefs based on currently available information. Such forward-looking statements are subject to a number of risks, uncertainties and other factors. Accordingly, actual results may differ materially from those projected due to various factors.

## Summary of Results and Forecasts

	Unit	Consolidated Results		Consolidated Forecasts
		FY2019	FY2020	FY2021
Revenue	Yen in Millions	<b>741,018</b>	<b>761,321</b>	<b>785,000</b>
Operating Income	Yen in Millions	<b>69,733</b>	<b>93,809</b>	<b>105,000</b>
Income before Income Taxes	Yen in Millions	<b>69,013</b>	<b>93,320</b>	<b>105,000</b>
Net Income	Yen in Millions	<b>47,224</b>	<b>70,308</b>	<b>75,000</b>
Basic Earnings Per Share	Yen	<b>301.32</b>	<b>472.71</b>	<b>506.87</b>
Dividend Payout Ratio	%	<b>66.4</b>	<b>42.3</b>	<b>43.4</b>
ROA	%	<b>5.1</b>	<b>7.4</b>	<b>7.6</b>
ROE	%	<b>6.8</b>	<b>10.0</b>	<b>10.2</b>
Operating Income to Revenue	%	<b>9.4</b>	<b>12.3</b>	<b>13.4</b>
Shareholders' Equity to Total Assets	%	<b>74.8</b>	<b>74.1</b>	<b>75.2</b>
Depreciation and Amortization	Yen in Millions	<b>49,390</b>	<b>47,950</b>	<b>51,000</b>
Capital Expenditure	Yen in Millions	<b>58,930</b>	<b>50,597</b>	<b>64,000</b>
R & D Expenditures	Yen in Millions	<b>33,765</b>	<b>35,261</b>	<b>37,000</b>
Exchange Rate (Average Rate)	Yen/1US\$	<b>109.1</b>	<b>105.9</b>	<b>105.0</b>

\* ROA Ratio of profit attributable to owners of the parent company to total assets  
 ROE Return on equity attributable to owners of the parent company

## Management Indices



## Business Results and Forecasts

(Yen in Millions)

		Revenue	Operating Income	Income before Income Taxes	Net Income
1H, FY2019 (Apr.-Sep.)	Results	<b>378,285</b>	<b>41,102</b>	<b>41,016</b>	<b>29,162</b>
2H, FY2019 (Oct.-Mar.)		<b>362,732</b>	<b>28,631</b>	<b>27,996</b>	<b>18,061</b>
FY2019		<b>741,018</b>	<b>69,733</b>	<b>69,013</b>	<b>47,224</b>
1H, FY2020 (Apr.-Sep.)		<b>357,737</b>	<b>42,367</b>	<b>41,822</b>	<b>30,573</b>
2H, FY2020 (Oct.-Mar.)		<b>403,583</b>	<b>51,441</b>	<b>51,498</b>	<b>39,734</b>
FY2020		<b>761,321</b>	<b>93,809</b>	<b>93,320</b>	<b>70,308</b>
	YoY (%)	<b>2.7</b>	<b>34.5</b>	<b>35.2</b>	<b>48.9</b>
1H, FY2021 (Apr.-Sep.)	Forecasts	<b>400,000</b>	<b>60,000</b>	<b>60,000</b>	<b>42,000</b>
FY2021		<b>785,000</b>	<b>105,000</b>	<b>105,000</b>	<b>75,000</b>

(Yen in Millions)

		Capital Expenditure	Depreciation and Amortization	R&D Expenditure
FY2019	Results	<b>58,930</b>	<b>49,390</b>	<b>33,765</b>
FY2020		<b>50,597</b>	<b>47,950</b>	<b>35,261</b>
FY2021	Forecasts	<b>64,000</b>	<b>51,000</b>	<b>37,000</b>

(Yen/1US\$)

Exchange Rate	1Q (Apr.-Jun.)	2Q (Jul.-Sep.)	3Q (Oct.-Dec.)	4Q (Jan.-Mar.)	Full-year
Results FY2019	<b>110.7</b>	<b>107.3</b>	<b>108.5</b>	<b>109.9</b>	<b>109.1</b>
Results FY2020	<b>108.3</b>	<b>106.3</b>	<b>104.8</b>	<b>104.4</b>	<b>105.9</b>
Forecasts FY2020 as of Jan. 26	/	/	/	<b>103.6</b>	<b>106.0</b>
Forecasts FY2021	<b>105.0</b>	<b>105.0</b>	<b>105.0</b>	<b>105.0</b>	<b>105.0</b>

## Revenue and Operating Income by Segment

(Yen in Millions)

		Results																				Forecasts			
		FY2019							FY2020													FY2020 as of Jan. 26			
		1Q (Apr.-Jun.)	2Q (Jul.-Sep.)	1H (Apr.-Sep.)	3Q (Oct.-Dec.)	4Q (Jan.-Mar.)	2H (Oct.-Mar.)	Full-year	1Q (Apr.-Jun.)	2Q (Jul.-Sep.)	1H (Apr.-Sep.)	3Q (Oct.-Dec.)	4Q (Jan.-Mar.)			2H (Oct.-Mar.)		Full-year			4Q (Jan.-Mar.)	2H (Oct.-Mar.)	Full-year		
													YoY (%)	QoQ (%)	Change from Forecasts (%)	YoY (%)	Change from Forecasts (%)	YoY (%)	Change from Forecasts (%)						
Industrial Tape	Functional Base Products	43,717	47,247	90,964	46,242	44,011	90,254	181,218	40,154	47,212	87,366	51,942	47,996	9.1	-7.6	9.9	99,939	10.7	4.5	187,305	3.4	2.4	43,691	95,633	183,000
	Transportation	36,084	36,189	72,274	34,387	30,683	65,071	137,345	20,746	29,868	50,614	35,218	35,924	17.1	2.0	5.1	71,142	9.3	2.5	121,757	-11.3	1.5	34,166	69,385	120,000
	Revenue	79,801	83,436	163,238	80,630	74,694	155,325	318,564	60,900	77,080	137,981	87,160	83,921	12.4	-3.7	7.8	171,081	10.1	3.7	309,063	-3.0	2.0	77,858	165,018	303,000
	Operating Income	5,567	7,960	13,527	6,143	854	6,997	20,525	1,650	6,820	8,471	12,404	6,436	653.6	-48.1	-	18,840	169.2	63.4	27,311	33.1	36.6	-875	11,528	20,000
Optronics	Information Fine Materials	81,408	101,132	182,541	94,724	77,744	172,468	355,009	85,782	98,001	183,783	99,437	89,602	15.3	-9.9	3.3	189,039	9.6	1.5	372,822	5.0	0.8	86,779	186,216	370,000
	Flexible Printed Circuits	9,794	10,835	20,629	11,825	10,835	22,660	43,289	10,390	13,539	23,930	16,489	15,643	44.4	-5.1	0.4	32,132	41.8	0.2	56,063	29.5	0.1	15,579	32,069	56,000
	Revenue	91,203	111,967	203,170	106,550	88,579	195,129	398,299	96,173	111,541	207,714	115,926	105,245	18.8	-9.2	2.8	221,172	13.3	1.3	428,886	7.7	0.7	102,358	218,285	426,000
	Operating Income	11,051	19,909	30,961	16,182	10,151	26,333	57,294	17,717	20,051	37,768	24,865	18,093	78.2	-27.2	14.0	42,958	63.1	5.5	80,727	40.9	2.8	15,866	40,731	78,500
Life Science	Revenue	5,856	6,896	12,752	7,305	7,070	14,376	27,129	7,043	6,755	13,799	7,590	8,465	19.7	11.5	-11.9	16,055	11.7	-6.7	29,855	10.0	-3.7	9,610	17,200	31,000
	Operating Income	-1,424	-547	-1,971	56	-631	-574	-2,546	-518	-797	-1,315	-124	-1,570	-	-	-	-1,695	-	-	-3,011	-	-	1,940	1,815	500
Others	Revenue	7,639	6,621	14,260	5,725	6,957	12,683	26,943	5,392	6,407	11,800	6,050	5,415	-22.2	-10.5	-4.1	11,466	-9.6	-2.0	23,266	-13.6	-1.0	5,649	11,699	23,500
	Operating Income	-26	-821	-847	-838	-936	-1,775	-2,622	-1,021	-1,342	-2,364	-1,905	-3,226	-	-	-	-5,131	-	-	-7,496	-	-	-1,230	-3,135	-5,500
Corporate/ Elimination	Revenue	-7,261	-7,874	-15,136	-7,762	-7,020	-14,782	-29,918	-6,199	-7,357	-13,557	-8,256	-7,936	-	-	-	-16,193	-	-	-29,750	-	-	-6,686	-14,942	-28,500
	Operating Income	-290	-276	-567	-2,449	100	-2,349	-2,916	-385	193	-191	-1,704	-1,825	-	-	-	-3,530	-	-	-3,722	-	-	-1,603	-3,308	-3,500
Total	Revenue	177,238	201,046	378,285	192,450	170,282	362,732	741,018	163,310	194,427	357,737	208,472	195,111	14.6	-6.4	3.3	403,583	11.3	1.6	761,321	2.7	0.8	188,789	397,262	755,000
	Operating Income	14,877	26,224	41,102	19,093	9,537	28,631	69,733	17,442	24,925	42,367	33,534	17,906	87.8	-46.6	27.0	51,441	79.7	8.0	93,809	34.5	4.2	14,097	47,632	90,000

(Yen/1US\$)

Exchange Rate	110.7	107.3	109.0	108.5	109.9	109.2	109.1	108.3	106.3	107.3	104.8	104.4				104.6			105.9			103.6	104.2	106.0
---------------	-------	-------	-------	-------	-------	-------	-------	-------	-------	-------	-------	-------	--	--	--	-------	--	--	-------	--	--	-------	-------	-------

(Note) From fiscal year 2020, partial changes have been made to reporting segments with change of management system, and the changes are reflected in the figures for the fiscal year 2019.

## Revenue and Operating Income Forecasts by Segment

(Yen in Millions)

		Results of FY2020							Forecasts of FY2021			
		1Q (Apr.-Jun.)	2Q (Jul.-Sep.)	1H (Apr.-Sep.)	3Q (Oct.-Dec.)	4Q (Jan.-Mar.)	2H (Oct.-Mar.)	Full-year	1H (Apr.-Sep.)	YoY(%)	Full-year	YoY(%)
Industrial Tape	Revenue	58,533	74,439	132,973	83,733	80,373	164,106	297,080	159,000	19.6	320,000	7.7
	Operating Income	1,650	6,820	8,471	12,404	6,436	18,840	27,311	17,000	100.7	36,000	31.8
Optronics	Information Fine Materials	85,782	98,001	183,783	99,437	89,602	189,039	372,822	173,500	-5.6	342,000	-8.3
	Flexible Printed Circuits	10,390	13,539	23,930	16,489	15,643	32,132	56,063	41,500	73.4	76,000	35.6
	Revenue	96,173	111,541	207,714	115,926	105,245	221,172	428,886	215,000	3.5	418,000	-2.5
	Operating Income	17,717	20,051	37,768	24,865	18,093	42,958	80,727	43,500	15.2	77,000	-4.6
Life Science	Revenue	7,043	6,755	13,799	7,590	8,465	16,055	29,855	21,500	55.8	37,500	25.6
	Operating Income	-518	-797	-1,315	-124	-1,570	-1,695	-3,011	3,000	-	2,026	-
Others	Revenue	5,392	6,407	11,800	6,050	5,415	11,466	23,266	12,000	1.7	24,500	5.3
	Operating Income	-1,021	-1,342	-2,364	-1,905	-3,226	-5,131	-7,496	-3,000	-	-5,981	-
Corporate/ Elimination	Revenue	-3,832	-4,716	-8,549	-4,829	-4,388	-9,218	-17,767	-7,500	-	-15,000	-
	Operating Income	-385	193	-191	-1,704	-1,825	-3,530	-3,722	-500	-	-4,045	-
Total	Revenue	163,310	194,427	357,737	208,472	195,111	403,583	761,321	400,000	11.8	785,000	3.1
	Operating Income	17,442	24,925	42,367	33,534	17,906	51,441	93,809	60,000	41.6	105,000	11.9

(Yen/1US\$)

Exchange Rate	108.3	106.3	107.3	104.8	104.4	104.6	105.9	105.0	/	105.0	/
---------------	-------	-------	-------	-------	-------	-------	-------	-------	---	-------	---

(Note) Previously, Industrial Tape was divided into Functional Base Products and Transportation. However, as a result of changes in the management structure from the fiscal year 2021, Functional Base Products and Transportation have been integrated and described as Industrial Tape. Such changes have also been reflected in the figures for the fiscal year 2020.

## Segment Revenue by Location

(Yen in Millions)

	4Q, FY2019 (Jan.-Mar.)					3Q, FY2020 (Oct.-Dec.)					4Q, FY2020 (Jan.-Mar.)				
	Japan	Americas	Europe (EMEA)	Asia & Oceania	Total	Japan	Americas	Europe (EMEA)	Asia & Oceania	Total	Japan	Americas	Europe (EMEA)	Asia & Oceania	Total
Functional Base Products	16,883	1,762	6,502	16,900	42,049	19,430	1,341	6,437	22,446	49,655	17,498	1,550	7,049	19,791	45,889
Transportation	9,747	6,828	3,406	9,183	29,165	11,692	6,037	3,390	11,921	33,041	10,114	6,288	3,637	13,623	33,663
Industrial Tape	26,631	8,591	9,908	26,083	71,214	31,122	7,379	9,827	34,367	82,697	27,612	7,839	10,686	33,415	79,553
Information Fine Materials	7,142	-	-	69,581	76,723	9,658	-	-	88,210	97,868	11,577	-	-	76,574	88,152
Flexible Printed Circuits	2,269	-	-	7,637	9,906	5,587	-	-	9,936	15,523	4,508	-	-	10,304	14,812
Optronics	9,412	-	-	77,218	86,630	15,245	-	-	98,147	113,392	16,085	-	-	86,879	102,964
Life Science	1,284	4,773	-	-	6,057	714	5,778	-	-	6,492	956	6,580	-	-	7,537
Others	539	3,733	812	1,006	6,091	587	2,491	1,204	1,382	5,666	383	2,149	782	1,389	4,705
Adjustments	287	-	-	-	287	223	-	-	-	223	350	-	-	-	350
Revenue Total	38,155	17,097	10,721	104,307	170,282	47,892	15,649	11,032	133,897	208,472	45,389	16,568	11,468	121,684	195,111

( % )

YoY					QoQ				
Japan	Americas	Europe (EMEA)	Asia & Oceania	Total	Japan	Americas	Europe (EMEA)	Asia & Oceania	Total
3.6	-12.0	8.4	17.1	9.1	-9.9	15.6	9.5	-11.8	-7.6
3.8	-7.9	6.8	48.4	15.4	-13.5	4.2	7.3	14.3	1.9
3.7	-8.8	7.8	28.1	11.7	-11.3	6.2	8.7	-2.8	-3.8
62.1	-	-	10.1	14.9	19.9	-	-	-13.2	-9.9
98.6	-	-	34.9	49.5	-19.3	-	-	3.7	-4.6
70.9	-	-	12.5	18.9	5.5	-	-	-11.5	-9.2
-25.5	37.9	-	-	24.4	33.9	13.9	-	-	16.1
-28.9	-42.4	-3.7	38.2	-22.8	-34.7	-13.8	-35.1	0.5	-17.0
21.9	-	-	-	21.9	57.1	-	-	-	57.1
19.0	-3.1	7.0	16.7	14.6	-5.2	5.9	4.0	-9.1	-6.4

(Yen in Millions)

	FY2019					FY2020				
	Japan	Americas	Europe (EMEA)	Asia & Oceania	Total	Japan	Americas	Europe (EMEA)	Asia & Oceania	Total
Functional Base Products	71,801	6,520	23,640	70,792	172,755	69,291	5,541	23,988	80,703	179,525
Transportation	44,183	29,828	13,629	42,925	130,566	38,505	21,119	11,318	43,060	114,004
Industrial Tape	115,985	36,349	37,270	113,717	303,321	107,797	26,660	35,307	123,764	293,529
Information Fine Materials	33,979	-	-	316,900	350,880	42,523	-	-	324,988	367,511
Flexible Printed Circuits	8,144	-	-	31,237	39,381	17,001	-	-	35,559	52,561
Optronics	42,123	-	-	348,138	390,262	59,525	-	-	360,548	420,073
Life Science	5,345	17,293	-	-	22,638	3,728	22,172	-	-	25,901
Others	1,915	13,016	3,132	5,680	23,744	1,834	9,591	3,498	5,859	20,784
Adjustments	1,050	-	-	-	1,050	1,032	-	-	-	1,032
Revenue Total	166,419	66,659	40,402	467,536	741,018	173,918	58,425	38,806	490,172	761,321

( % )

YoY				
Japan	Americas	Europe (EMEA)	Asia & Oceania	Total
-3.5	-15.0	1.5	14.0	3.9
-12.9	-29.2	-17.0	0.3	-12.7
-7.1	-26.7	-5.3	8.8	-3.2
25.1	-	-	2.6	4.7
108.8	-	-	13.8	33.5
41.3	-	-	3.6	7.6
-30.2	28.2	-	-	14.4
-4.2	-26.3	11.7	3.2	-12.5
-1.7	-	-	-	-1.7
4.5	-12.4	-4.0	4.8	2.7

(Note) 1 Major countries or regions excluding Japan are represented as follows:  
Americas : U.S.A., Mexico, Brazil

Europe (EMEA) : Belgium, France, Germany, Sweden, Turkey, Africa

Asia & Oceania : China, Korea, Taiwan, Singapore, Malaysia, Hong Kong, Thailand, Vietnam

2 From fiscal year 2020, partial changes have been made to reporting segments with change of management system, and the changes are reflected in the figures for the fiscal year 2019.

## Revenue to Customers outside Japan

(Yen in Millions)

	4Q, FY2019 (Jan.-Mar.)					3Q, FY2020 (Oct.-Dec.)					4Q, FY2020 (Jan.-Mar.)							
	Americas	Europe	Asia & Oceania	Others	Total	Americas	Europe	Asia & Oceania	Others	Total	Americas	Europe	Asia & Oceania	Others	Total			
			China					China					China					
Revenue to Customers outside Japan	14,742	11,954	102,804	48,640	276	129,777	12,942	12,508	135,703	69,251	349	161,503	13,697	13,336	125,044	65,882	275	152,353
Consolidated Revenue						170,282						208,472						195,111

(%)

	Americas	Europe	Asia & Oceania	Others	Total	Americas	Europe	Asia & Oceania	Others	Total	Americas	Europe	Asia & Oceania	Others	Total			
Ratio to Consolidated Revenue	8.7	7.0	60.4	28.6	0.2	76.2	6.2	6.0	65.1	33.2	0.2	77.5	7.0	6.8	64.1	33.8	0.1	78.1

(%)

YoY					QoQ							
Americas	Europe	Asia & Oceania	Others	Total	Americas	Europe	Asia & Oceania	Others	Total			
		China					China					
	-7.1	11.6	21.6	35.4	-0.2	17.4	5.8	6.6	-7.9	-4.9	-21.1	-5.7
						14.6						-6.4

(pt)

	Americas	Europe	Asia & Oceania	Others	Total	Americas	Europe	Asia & Oceania	Others	Total		
	-1.7	-0.2	3.7	5.2	-0.1	1.9	0.8	0.8	-1.0	0.6	-0.1	0.6

(Yen in Millions)

	FY2019					FY2020																		
	Americas	Europe	Asia & Oceania	Others	Total	Americas	Europe	Asia & Oceania	Others	Total	Americas	Europe	Asia & Oceania	Others	Total									
			China						China					China										
Revenue to Customers outside Japan	58,537	45,264	455,664	230,264	907	560,374												49,388	44,590	495,928	262,372	1,146	591,053	
Consolidated Revenue						741,018																		761,321

(%)

	Americas	Europe	Asia & Oceania	Others	Total	Americas	Europe	Asia & Oceania	Others	Total													
Ratio to Consolidated Revenue	7.9	6.1	61.5	31.1	0.1	75.6												6.5	5.9	65.1	34.5	0.2	77.6

(%)

YoY						
Americas	Europe	Asia & Oceania	Others	Total		
		China				
	-15.6	-1.5	8.8	13.9	26.3	5.5
						2.7

(pt)

	Americas	Europe	Asia & Oceania	Others	Total	
	-1.4	-0.2	3.6	3.4	0.1	2.0

- (Note) 1 Major countries or regions are represented as follows:  
Americas : U.S.A., Mexico, Brazil  
Europe: Belgium, France, Germany, Sweden, Turkey  
Asia & Oceania : China, Korea, Taiwan, Singapore, Malaysia, Hong Kong, Thailand, Vietnam  
Others: African countries

- 2 Revenue to customers outside Japan is the revenue from customers outside Japan by the Company and its consolidated subsidiaries.