

## Share Information

## Share Information (As of March 31, 2018)

Number of shares authorized:  
150,000,000

Number of shares issued:  
68,638,210  
(Including 5,931,205 shares of  
treasury stock)

Trading unit:  
100 shares

Number of shareholders:  
6,386 shareholders  
(up 591 year on year)

Listing exchange:  
First Section of the  
Tokyo Stock Exchange

Securities code:  
6457

Administrator of  
shareholder registry:  
Mitsubishi UFJ Trust and  
Banking Corporation

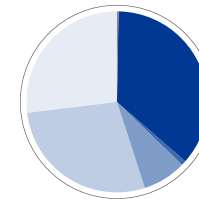
## Major Shareholders

Shareholder	Number of shares held (Thousands of shares)	Holding ratio (%)
Nippon Life Insurance Company	3,427	5.0
The Master Trust Bank of Japan, Ltd. (Trust account)	3,290	4.8
Japan Trustee Services Bank, Ltd. (Trust account)	2,567	3.7
Sumitomo Mitsui Banking Corporation	2,100	3.1
GLORY Group Employees' Stock Ownership Association	2,049	3.0
Japan Trustee Services Bank, Ltd. (Trust account 9)	1,760	2.6
Tatsubo Fashion Co. Ltd.	1,500	2.2
JP MORGAN CHASE BANK 385174	1,185	1.7
Japan Trustee Services Bank, Ltd. (Trust account 5)	1,140	1.7
STATE STREET BANK AND TRUST COMPANY 505223	1,118	1.6

In addition to the above, the Company holds 5,931,205 shares of treasury stock.

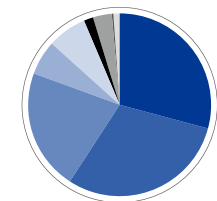
## Shareholder Distribution

## Distribution by Ownership of Shares



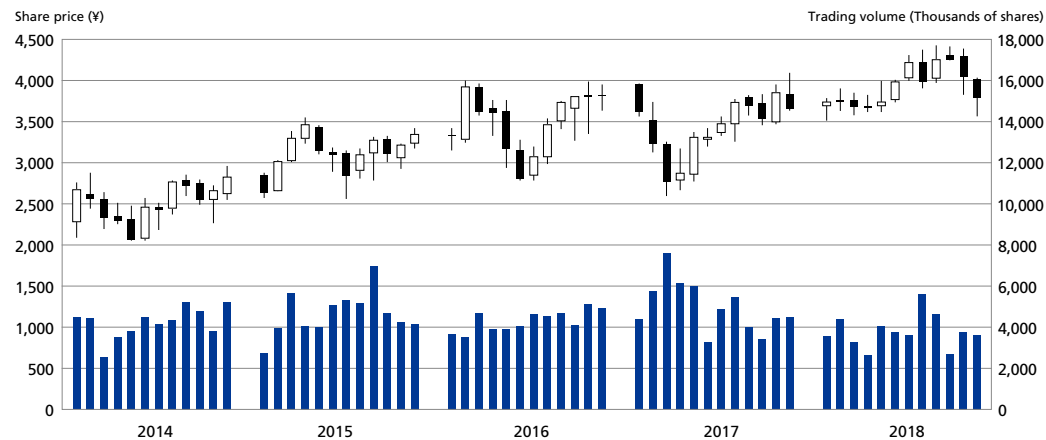
National and regional government bodies	0.2%
Financial institutions	36.3%
Securities companies	0.6%
Other Japanese companies	7.8%
Overseas individuals and companies	28.1%
Japanese individuals, etc.	27.0%

## Distribution by Number of Shares



1 million shares or over	29.3%
500,000-999,999 shares	29.9%
100,000-499,999 shares	21.4%
50,000-99,999 shares	6.2%
10,000-49,999 shares	6.9%
5,000-9,999 shares	1.6%
1,000-4,999 shares	3.4%
500-999 shares	0.4%
Less than 500 shares	0.9%

## Trends in Share Price and Trading Volume (Years ended March 31)



	2014	2015	2016	2017	2018
FY-end share price (Yen)	2,829	3,350	3,825	3,650	3,795
High (Yen)	2,960	3,545	4,000	4,095	4,430
Low (Yen)	2,058	2,562	2,796	2,606	3,515
Total trading volume (Shares)	50,860,700	56,093,800	51,754,300	59,845,600	45,677,300

\* The graph, share price and total trading volume from the table above are from Osaka Securities Exchange before July 15, 2013, and from Tokyo Stock Exchange after July 16, 2013.  
(The cash equity market of the Osaka Securities Exchange was integrated into the Tokyo Stock Exchange on July 16, 2013.)