

SHARE INFORMATION

[As of March 31, 2014]

Share Information

Number of shares authorized	150,000,000
Number of shares issued	68,638,210 (Including 2,951,091 shares of treasury stock)
Trading unit	100 shares
Number of shareholders	7,638 shareholders (up 275 year on year)
Listing exchange	First Section of the Tokyo Stock Exchange
Securities code	6457
Administrator of shareholder registry	Mitsubishi UFJ Trust and Banking Corporation

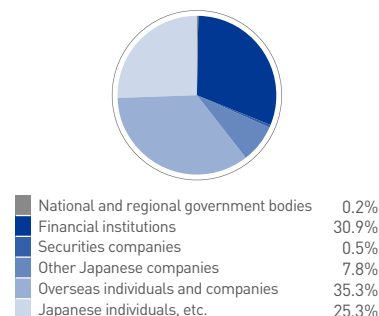
Major shareholders

Shareholder	Number of shares held (Thousands of shares)	Holding ratio (%)
STATE STREET BANK AND TRUST COMPANY 505223	3,584	5.2
Nippon Life Insurance Company	3,427	5.0
NORTHERN TRUST CO. (AVFC) RE 15PCT TREATY ACCOUNT	2,430	3.5
Japan Trustee Services Bank, Ltd. (Trust account)	2,143	3.1
Sumitomo Mitsui Banking Corporation	2,100	3.1
The Master Trust Bank of Japan, Ltd. (Trust account)	2,050	3.0
GLORY Group Employees' Stock Ownership Association	1,927	2.8
JP MORGAN CHASE BANK 385174	1,662	2.4
Tatsubo Fashion Co. Ltd.	1,500	2.2
GLORY Business Partners' Stock Ownership Association	1,048	1.5

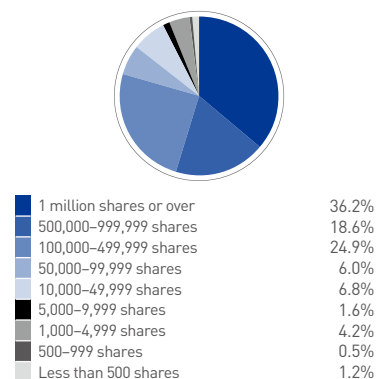
In addition to the above, the Company holds 2,951,091 shares of treasury stock.

Shareholder distribution

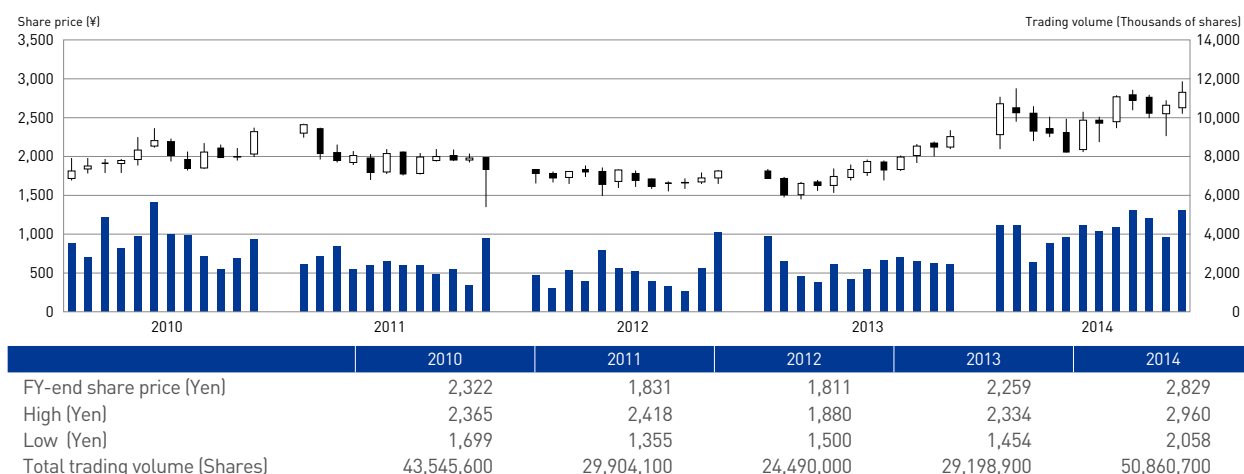
Distribution by ownership of shares



Distribution by number of shares



Trends in Share Price and Trading Volume (Years ended March 31)



* The graph, share price and total trading volume from the table above are from Osaka Securities Exchange before July 15, 2013, and from Tokyo Stock Exchange after July 16, 2013. (The cash equity market of the Osaka Securities Exchange was integrated into the Tokyo Stock Exchange on July 16, 2013.)