

## Share Information

### Share Information (As of March 31, 2020)

Number of shares authorized:  
150,000,000

Number of shares issued:  
63,638,210  
(Including 2,866,029 shares of  
treasury stock)

Trading unit:  
100 shares

Number of shareholders:  
9,064 shareholders  
(down 147 year on year)

Listing exchange:  
First Section of the  
Tokyo Stock Exchange

Securities code:  
6457

Administrator of  
shareholder registry:  
Mitsubishi UFJ Trust and  
Banking Corporation

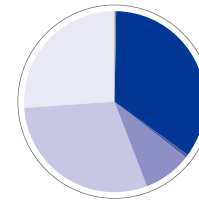
### Major Shareholders

Shareholder	Number of Shares Held (Thousands of shares)	Holding Ratio (%)
Nippon Life Insurance Company	3,427	5.4
The Master Trust Bank of Japan, Ltd. (Trust account)	3,271	5.1
GLORY Group Employees' Stock Ownership Association	2,300	3.6
Japan Trustee Services Bank, Ltd. (Trust account)	2,296	3.6
Sumitomo Mitsui Banking Corporation	2,100	3.3
Japan Trustee Services Bank, Ltd. (Trust account 9)	2,004	3.2
Tatsubo Fashion Co. Ltd.	1,500	2.4
STATE STREET CLIENT OMNIBUS ACCOUNT OM44	1,346	2.1
GLORY Business Partners' Stock Ownership Association	1,073	1.7
Japan Trustee Services Bank, Ltd. (Trust account 5)	1,046	1.6

In addition to the above, the Company holds 2,866,029 shares of treasury stock.

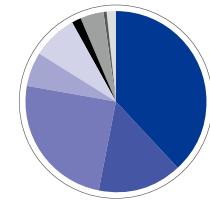
### Shareholder Distribution

#### Distribution by Ownership of Shares



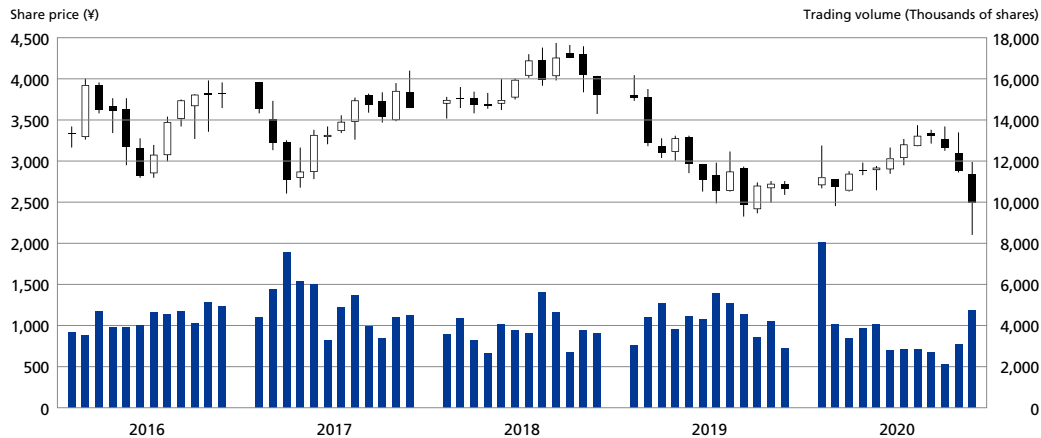
National and regional government bodies	0.2%
Financial institutions	34.8%
Securities companies	0.8%
Other Japanese companies	8.5%
Overseas individuals and companies	29.7%
Japanese individuals, etc.	26.0%

#### Distribution by Number of Shares



1 million shares or over	38.1%
500,000-999,999 shares	15.2%
100,000-499,999 shares	24.7%
50,000-99,999 shares	6.1%
10,000-49,999 shares	7.9%
5,000-9,999 shares	1.7%
1,000-4,999 shares	4.3%
500-999 shares	0.6%
Less than 500 shares	1.4%

### Trends in Share Price and Trading Volume (Years Ended March 31)



	2016	2017	2018	2019	2020
FY-end Share Price (Yen)	3,825	3,650	3,795	2,656	2,490
High (Yen)	4,000	4,095	4,430	4,045	3,430
Low (Yen)	2,796	2,606	3,515	2,322	2,100
Total Trading Volume (Shares)	51,754,300	59,845,600	45,677,300	50,792,900	44,573,100

\* The graph, share price and total trading volume from the table above are from Tokyo Stock Exchange.