

Share Information

Share Information (As of March 31, 2019)

Number of shares authorized:
150,000,000

Number of shares issued:
68,638,210
(Including 7,865,917 shares of
treasury stock)

Trading unit:
100 shares

Number of shareholders:
9,211 shareholders
(up 2,825 year on year)

Listing exchange:
First Section of the
Tokyo Stock Exchange

Securities code:
6457

Administrator of
shareholder registry:
Mitsubishi UFJ Trust and
Banking Corporation

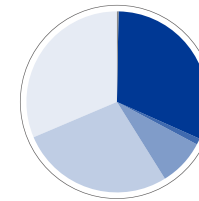
Major Shareholders

Shareholder	Number of shares held (Thousands of shares)	Holding ratio (%)
Nippon Life Insurance Company	3,427	5.0
The Master Trust Bank of Japan, Ltd. (Trust account)	2,739	4.0
Japan Trustee Services Bank, Ltd. (Trust account)	2,227	3.2
GLORY Group Employees' Stock Ownership Association	2,190	3.2
Sumitomo Mitsui Banking Corporation	2,100	3.1
Tatsubo Fashion Co. Ltd.	1,500	2.2
Japan Trustee Services Bank, Ltd. (Trust account 9)	1,433	2.1
STATE STREET CLIENT OMNIBUS ACCOUNT OM44	1,261	1.8
JP MORGAN CHASE BANK 385174	1,123	1.6
Japan Trustee Services Bank, Ltd. (Trust account 5)	1,091	1.6

In addition to the above, the Company holds 7,865,917 shares of treasury stock.

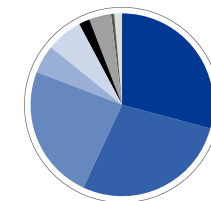
Shareholder Distribution

Distribution by Ownership of Shares



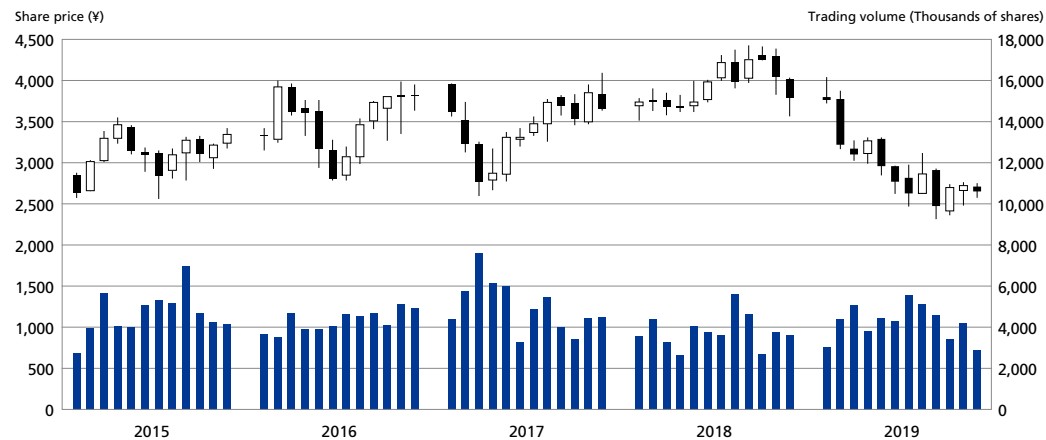
National and regional government bodies	0.2%
Financial institutions	31.5%
Securities companies	1.3%
Other Japanese companies	8.2%
Overseas individuals and companies	27.5%
Japanese individuals, etc.	31.3%

Distribution by Number of Shares



1 million shares or over	29.3%
500,000-999,999 shares	27.7%
100,000-499,999 shares	23.9%
50,000-99,999 shares	5.1%
10,000-49,999 shares	6.4%
5,000-9,999 shares	1.8%
1,000-4,999 shares	3.9%
500-999 shares	0.6%
Less than 500 shares	1.3%

Trends in Share Price and Trading Volume (Years ended March 31)



	2015	2016	2017	2018	2019
FY-end share price (Yen)	3,350	3,825	3,650	3,795	2,656
High (Yen)	3,545	4,000	4,095	4,430	4,045
Low (Yen)	2,562	2,796	2,606	3,515	2,322
Total trading volume (Shares)	56,093,800	51,754,300	59,845,600	45,677,300	50,792,900

* The graph, share price and total trading volume from the table above are from Tokyo Stock Exchange.