

Isetan Mitsukoshi Holdings Monthly Sales Flash Report

(Domestic department Store Business)



1-May-15

Isetan Mitsukoshi Ltd.(Tokyo Metropolitan area) Stores sales

※Except for Corporate Customer Business and Tenant stores Business.

Store	YoY (%)	Total Apr to Apr
Isetan Shinjuku Main store※	117.9%	117.9%
Mitsukoshi Nihombashi Main store ※	115.5%	115.5%
Mitsukoshi Ginza store	142.7%	142.7%
Isetan Tachikawa store	111.2%	111.2%
Isetan Matsudo store	106.4%	106.4%
Isetan Urawa store	108.9%	108.9%

Store	YoY (%)	Total Apr to Apr
Isetan Sagamiyara store	107.0%	107.0%
Isetan Fuchu store	104.0%	104.0%
Mitsukoshi Chiba store	100.1%	100.1%

SubTotal (A)	117.0%	117.0%
---------------------	--------	--------

Domestic regional Companys sales

Company	YoY (%)	Total Apr to Apr
Sapporo Marui Mitsukoshi Ltd.	108.0%	108.0%
Hakodate Marui Imai Ltd.	102.2%	102.2%
Sendai Mitsukoshi Ltd.	111.3%	111.3%
Niigata Isetan Mitsukoshi Ltd.	104.6%	104.6%
Shizuoka Isetan Co., Ltd.	103.9%	103.9%

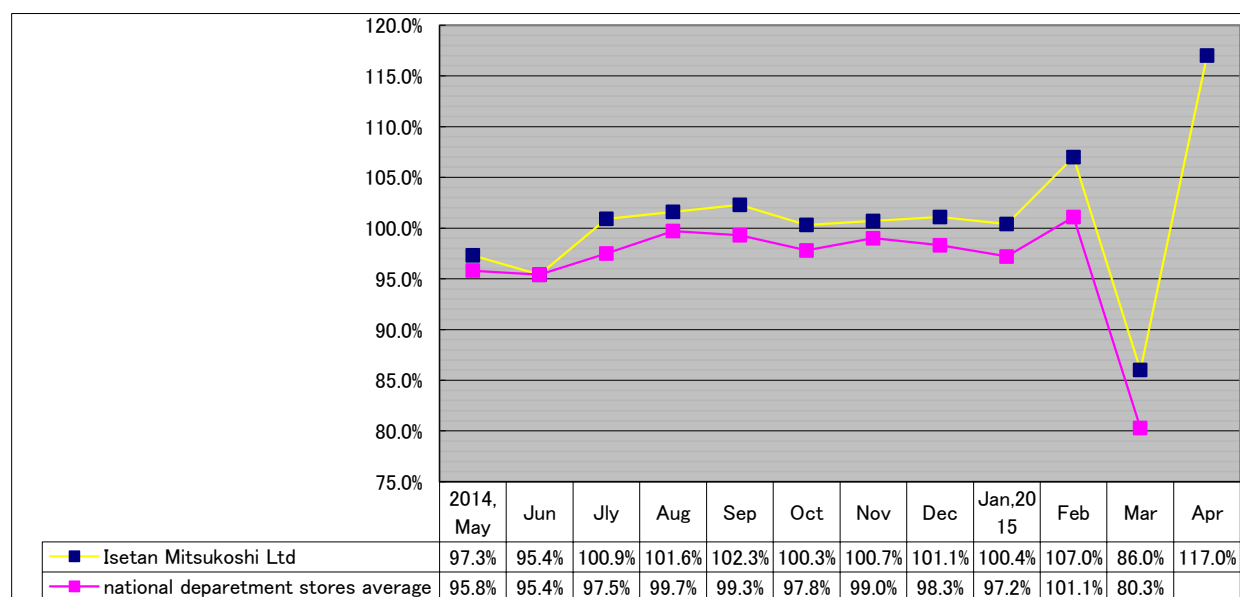
Company	YoY (%)	Total Apr to Apr
Nagoya Mitsukoshi Ltd.	116.3%	116.3%
Hiroshima Mitsukoshi Ltd.	103.0%	103.0%
Takamatsu Mitsukoshi Ltd.	118.3%	118.3%
Matsuyama Mitsukoshi Ltd.	113.8%	113.8%
Iwataya Mitsukoshi Ltd.	116.3%	116.3%

SubTotal (B)	111.8%	111.8%
---------------------	--------	--------

GrandTotal(A+B)	115.0%	115.0%
------------------------	--------	--------

Monthly sales change for the past one year(year on year)

[Isetan Mitsukoshi Ltd.(Tokyo Metropolitan area)・national departement stores average]



【Contact】

Administration Headquarter Corporate Administration Division, Isetan Mitsukoshi Holdings Ltd.